

FIRST AID | EYE WASH | PLASTERS | WOUND CARE





A  GRAMM MEDICAL BRAND

You know the own brand **ACTIOMEDIC®** of GRAMM medical healthcare GmbH from our products.

ACTIOMEDIC® is the strong first aid brand for products you can always rely on 100% in an emergency. Our products are useful companions for business and professional use as well as for private needs.

The versatile ACTIOMEDIC® product range is characterized both by consistently high quality

and new product innovations. Our 100+ years of experience as a manufacturer of medical devices enable us to bring product solutions to the market that recognize customer and user needs. Our close customer relations and a lively exchange of ideas also help us to offer first aid products that convince with smart and well thought-out features.

**React quickly, help in a targeted manner.**  
**With ACTIOMEDIC®.**



# First Aid | General Information

## **i** Did you know?

Through its DIN regulations, the legislator defines the minimum requirements of first aid kits and dressing materials for the various fields of application. Both in road traffic and in companies, schools and kindergartens and in professional use, compliance with these stan-

dards is regularly monitored by the respective responsible bodies (BG, police, etc.).

In the following you can inform yourself about the regulations and standards that apply to you.



**So that you are prepared for every eventuality:**

## Legal Basis



- The Occupational Insurance Association as an autonomous legislation enacts accident prevention regulations (German: SGB VII § 15).
- **The employer must ensure that the required facilities and materials as well as the required personnel needed for first aid and rescue from danger are available (UVV BGV A1 §24).**
- **The employer must ensure that rescue equipment and rescue transportation is kept in readiness**, taking into account the operational conditions (German: BGV A 1 § 25 UVV).  
→ Comments hereto in the BG rules BGR A 1 § 24 and 25, section 3.
- Success and quality of first aid often depend on the use of the appropriate medical aids. It is the **responsibility of the entrepreneur to determine the kind, quantity and storage location**. Kind and quantity as well as the storage location of the first aid material depend on the company size, the existing operational risks, the extent and structure of the company.  
→ Helpful information can be found in the BG information 509, first aid in companies, chapter 3.5 to 7.5 as well as in annex 1 and ASR A4.3.
- Even within a company the requirement profiles of first aid equipment as well as the risks of injury can differ greatly. Each industry has different requirements and risks. **Therefore the responsibility for the proper selection of first aid material lies with the entrepreneur.**
- As a basis for the occupational first aid system DIN standards are **merely an indication of the minimum requirements with regard to equipment quantity and equipment quality**, e.g. of first aid boxes. DIN 13 157 and DIN 13 169 can be considered as basic equipment. More extensive content or higher equipment quality - especially in regard to dressings - is always recommended.

## **i** Did you know?

**GRAMM medical** has developed special solutions, which are adapted to the different requirements of the individual industries. The entrepreneur can select thereby exactly the first aid equipment, which was arranged and cut for its business form particularly.

In the First Aid series SPECIAL from **GRAMM medical** the user/consumer always finds the appropriate and necessary equipment for his business. → Products for this can be found starting on page 09.

## DIN 13 157 + DIN 13 169

Recommended contents of dressing containers for occupational safety



This must be present in every company. Corresponding You will find regulations on this in the next pages.

→ You can find products starting on page 07

## DIN 13 164

Car first-aid boxes/bags,  
Car combination bags



Legal obligation to carry in motorized vehicles. The regulations can be found in the Road Traffic Regulations (StVO).

→ You can find products starting on page 51

## DIN 13 157 + DIN 13 160

For schools and kindergartens



First aid boxes/bags with these standards can be used in schools and kindergartens stationary or on excursions. The regulations can be found in booklets of the legal accident insurance. (GUV 20.26 - 20.38, GUV SI 8065)

→ You can find products starting on page 59

## DIN 13 167

Motorcycle first aid bags



Not mandatory in Germany prescribed, because according to the Ministry of Transport not enough storage space in the motorcycle.

→ You can find products starting on page 52

## ISO 20 471

Company vehicles / high visibility vests



Carrying a high visibility vest in a commercial vehicle is mandatory according to the Employer's Liability Insurance Association (BGF). (UUV vehicles BGV - D29)

**!** Since 01.07.2014 there is also a warning vest obligation for private cars in Germany.

→ You can find products starting on page 53

## DIN 14 142 + DIN 13 164

Rescue vehicles



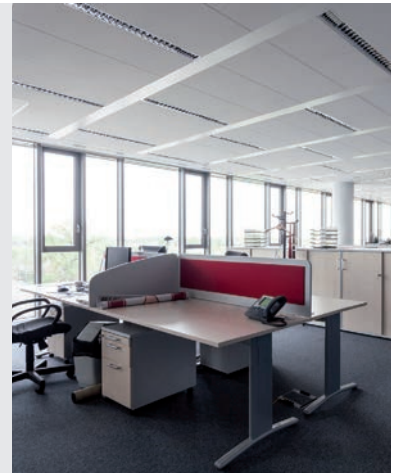
Special fillings for patient transport and road transport with dangerous goods (GGVS).

→ You can find products starting on page 53

## First Aid for Office + Business

### **i** Did you know?

Comprehensive and up-to-date first aid equipment is part of every business, regardless of the industry. First aid kits and first aid cabinets with equipment according to DIN 13 157 and DIN 13 169 differ only in the amount of first aid materials they contain, not in the type. Depending on the industry and the number of employees, an adequate first aid kit is needed.



### **i** Our Tip

During operation, a dry, cool and easily accessible place where the first aid kit or first aid box is stored should be specified. The contents should also be checked regularly for completeness and expired dressing materials should be replaced.

## Recognizing the required DIN standard

The following tables show which first-aid equipment you need for your operation. A large first aid kit with filling according to DIN 13 169 can be replaced by two first aid kits DIN 13 157.

### Small first aid kit with dressing material filling according to DIN 13 157

Business type	Number of employees	DIN standard
Administration and trading companies	1 to 50 employees	1 first-aid box DIN 13 157
Production and processing plants	1 to 20 employees	1 first-aid box DIN 13 157
Construction sites	1 to 10 employees	1 first-aid box DIN 13 157

### Large first aid kit with dressing material filling according to DIN 13 169

Business type	Number of employees	DIN standard
Administration and trading companies	51 to 300 employees 300 additional employees each	First aid box DIN 13 157 additional 1 first-aid box DIN 13 169
Production and processing plants	21 to 100 employees per 100 additional employees	First aid box DIN 13 169 additional 1 first-aid box DIN 13 169
Construction sites	11 to 50 employees 50 additional employees each	First aid box DIN 13 169 additional 1 first-aid box DIN 13 169

### **!** Important

According to BGI 544-1, companies of all kinds are obliged to keep a manual for the documentation of industrial accidents. The manual of associations and further information can be found on page 20.



## Our high-quality ABS First Aid Kits

**NEU!**  
 Mehrsprachige  
 Kofferbedruckung



Space-saving:  
 Wall mounting bracket included

Integrated handle  
 (from one cast with  
 case shells manufactured)

When speed is of the  
 essence: smooth-running  
 screw caps

Available in 3 sizes:  
**DOMINO**  
 approx. 280 x 115 x 200 mm  
**SAN**  
 approx. 340 x 120 x 240 mm  
**MULTI**  
 approx. 420 x 150 x 330 mm

Multilingual imprint with  
 18 languages

Case housing made of robust,  
 impact-resistant, high-quality  
 ABS plastic

Variable interior division  
 of transparent cover and  
 separation plates

Protection against dirt and splashing  
 water through circumferential rubber  
 seal

Signal color orange:  
 easy to recognize and find



**BGV/GUV-V A1 §25** – Required facilities and material:  
**2 | The employer has to make sure that the first aid material is anytime quickly and easily accessible,**  
 stored in adequate containers, protected against damaging influences, available in sufficient quantity, as well  
 as refilled and renewed regularly.



## First Aid Cases

### First Aid Case DOMINO

Impact and break-proof first aid case made of ABS plastic, equipped according to DIN 13 157, with wall mount and rubber seal, adjustable interior division, mobile and stationary use, lockable with lead seal.

Dimensions: approx. 280 x 115 x 200 mm

Color: orange, with first aid symbol and inscription „First Aid“

Art.Nr.	Version	PU
418.035.00200	First aid kit with contents according to DIN 13 157	1 pc.



### First Aid Case SAN

Impact and break-proof first aid case made of ABS plastic, equipped according to DIN 13 157 or DIN 13 169, with wall bracket and rubber seal, with 90° stop in the wall bracket, adjustable interior division, mobile and stationary use, lock can be sealed.

Dimensions: approx. 340 x 120 x 240 mm

Color: orange, with first aid symbol and inscription „First Aid“

Art.Nr.	Version	PU
418.035.00300	First aid kit with contents according to DIN 13 157	1 pc.
418.035.00369	First aid kit with contents according to DIN 13 169	1 pc.



### First Aid Case MULTI

Impact and break-proof first aid case made of ABS plastic, equipped according to DIN 13 169, with wall holder and rubber seal, with 90° stop in the wall holder, adjustable interior division, mobile and stationary use, lockable with lead seal

Dimensions: approx. 420 x 150 x 330 mm

Color: orange, with first aid symbol and inscription „First Aid“

Art.Nr.	Version	PU
418.035.00400	First aid kit with contents according to DIN 13 169	1 pc.



### First aid kit for the transport of dangerous goods with DIN 13 164 filling

Impact and break-proof dressing case made of ABS plastic, adjustable interior division, mobile and stationary use, with wall mount and rubber seal, sealable closure, contents: filling according to DIN 13 164, 1 rescue blanket, 1 pair of goggles, 1 pair of acid-proof gloves, 1 eye wash solution, 2 disposable aprons.

Dimensions: approx. 340 x 120 x 240 mm

Color: orange, with first aid symbol

Art.Nr.	Version	PU
415.035.08400	Content according to DIN 13 164 + addition	1 pc.



# First Aid | DIN First Aid Cabinets

## **i** Did you know?

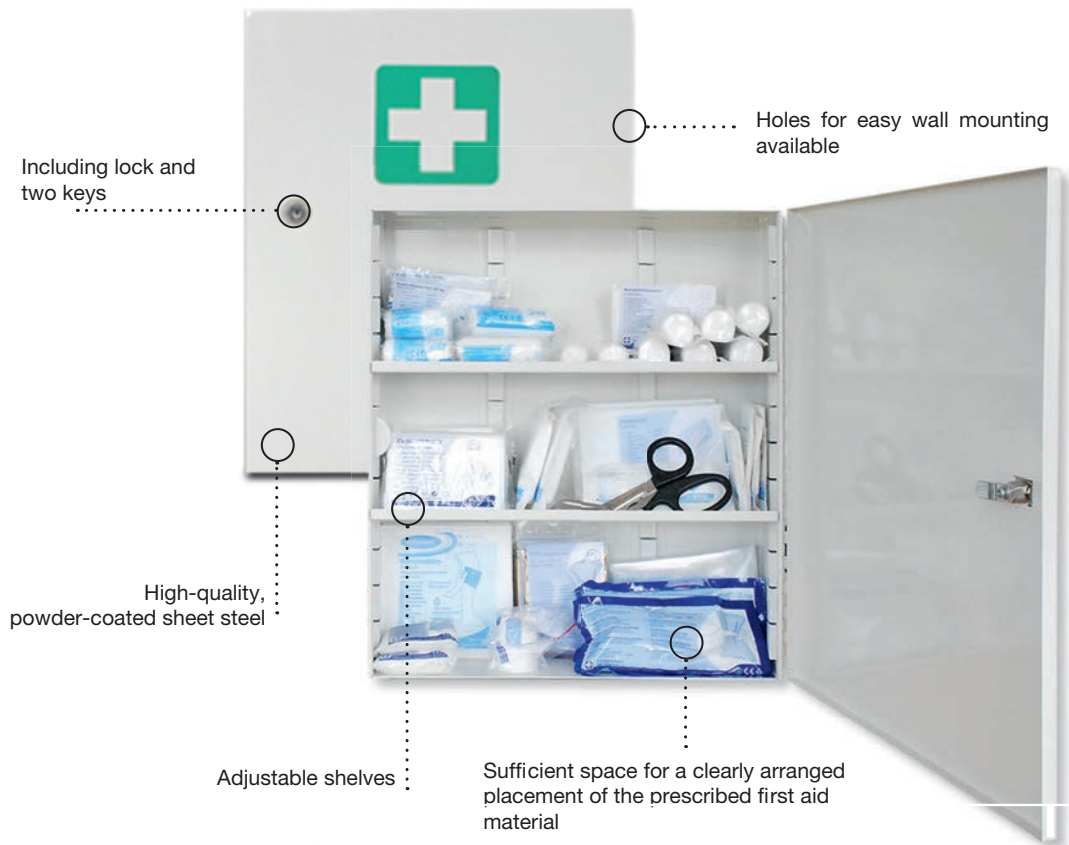
Our high-quality sheet steel and plastic cabinets stand for durability and have proven themselves in practice for many years.

Our robust sheet steel wardrobes of the model series A to C are powder-coated and by default with green rescue symbol (white cross on green background) on the front.

They are equipped with a cylinder lock and two keys, offer sufficient space for systematic order and a quick overview of the available dressing material and are designed for DIN fillings.

All first-aid cabinets are suitable for wall mounting and are ideal for safe storage of your first aid products.

## Our high-quality metal first-aid cabinets for wall mounting



### Metal First Aid Cabinet B

Single-door first-aid cabinet made of robust sheet steel, equipped according to DIN 13 169 or empty, stove-enamelled, two adjustable shelves, safety lock with two keys.

Dimensions: approx. 400 x 110 x 455 mm

Empty weight: 4,7 kg

Material: robust sheet steel

With filling: 5,8 kg

Color: white, with first aid symbol

Art.Nr.

Version

PU

418.036.00600

First aid cabinet with contents according to DIN 13 169

1 pc.





## First Aid Bags

### First Aid Softbox with handle according to DIN 13 157

Sturdy, robust and lightweight softbox, in space-saving format with carrying handle, with all-round zipper and transparent inner divider for optimum access and immediate overview, equipped with GRAMM quality dressing materials according to DIN 13 157, all contents labelled in several languages and provided with illustrations for easy use.

Dimensions: 250 x 90 x 175 mm      Weight: 850 g

Art.Nr.	Version	PU
420.035.13157	First Aid Softbox with DIN 13 157 filling	8 pcs.



### Bicycle and leisure first-aid bag

First-aid bag with Velcro straps on the back for attachment to a bicycle, pannier or rucksack, provides fast first aid during bicycle tours, hikes and other leisure activities.

Contents: BR bandage cloth, disposable gloves, fixing bandages, scissors, plaster set, adhesive plasters, tweezers, compresses, safety pins, first aid instructions.

Dimensions: approx. 170 x 50 x 125 mm  
Color: blue

Art.Nr.	Version	PU
420.018.10100	blue	10 pcs.



### Outdoor first aid bag

Handy first-aid kit in a spacious bag for all outdoor activities, e.g. excursions, hikes, playground visits, practical Velcro straps on the back for attaching to a rucksack, bag, etc.

Contents: Tick tweezers, cooling compress, combination plaster set, quick-action wound dressings, scissors, bandage packs, fixing bandage, disposable gloves, rescue blanket, compresses, non-woven cloths, roll of adhesive plasters, first aid instructions

Dimensions: approx. 150 x 55 x 120 mm  
Color: red

Art.Nr.	Version	PU
420.018.10070	red	10 pcs.





# Eye Wash | First Aid for the Eyes



## Every second counts: Protection for your most important sense organ

### **i** Did you know?

Our eye is a masterpiece of nature and the most important sense organ of man. Only the interaction of many small parts in this sensitive organ makes vision possible.

More than 90% of all sensory impressions are received through the eye. Reason enough to pay special attention to this sensory organ - and to make provisions for the worst case scenario.

Just a few seconds can make the difference between impaired vision and, in the worst case, loss of vision. In the case of an eye injury caused by foreign bodies or chemical burns, seconds can be lost. If first aid is not given immediately and consistently in such a case, the eye can suffer permanent irreparable damage. Every year, eye injuries are one of the most frequent accidents reported by the professional associations. Precaution and prudent action is of great importance here.

GRAMM medical offers here different solutions, which are mobile and stationary applicable and are cut to the kind of the job as well as the size of the enterprise. The variety of our products guarantees you an optimal solution, which is suitable for every working environment.

Our eye wash concept is developed in such a way that every user can use it easily and flexibly - without assistance. We guarantee a safe and simple application.

All ACTIONMEDIC® EYE CARE products are CE tested and approved medical products and are constantly subjected to strict quality controls. All products comply with DIN EN 1515-4 (eye showers without water connection).

Do you have any questions? We will be happy to advise you.

Endangered workplaces	Nature of the injury	Eye wash product / effect
Workshops Metalworking companies Industry Woodworking companies etc. Shipyards and mining Civil Protection	Mechanical injury due to foreign body entry, e.g. chips, metal splinters, dirt etc.	<b>Sodium chloride solution, 0.9%</b> → washes foreign bodies from the eye
Chemical laboratories Chemical companies Industry Police Military Fire department and others	Chemical burns, e.g. acids and alkalis	<b>Buffered eye wash solution BioPhos®74</b> → neutralizes chemicals in the eye

# Our high-quality **ACTIOMEDIC® EYE CARE** Eye Wash Bottle

Dust protection cap



Ergonomically shaped eye cup



Content: NaCl 0.9% (sterile)



Multilingual label



Application pictogram



Optionally also available with single seal → Further information on request.

Best before date of 3 years



Eyelet wall holder for all GRAMM eye wash bottles

## Regulations and standards for eye wash bottles:

GRAMM medical eye wash bottles are CE-certified and comply with DIN EN 15 154-4. Eye washes without water connection and are medical products according to MPG.

### Occupational Safety and Health Act §3:

The employer must organize measures for occupational safety and health and provide suitable means to improve safety and health protection in the company. The employees must use the personal protective equipment provided.

### Workplace Ordinance § 39:

Depending on the type of hazard (e.g. when handling acids and alkalis) eye rinsing bottles must be available.

### Transport of hazardous goods:

Obligation of the forwarding agency to equip each transporter of hazardous goods with a car first-aid box according to DIN 13 164, which is extended by an eye rinsing bottle, safety goggles, etc.



# Eye Wash Solution BioPhos®74

Eye rinsing for chemical burns - even more gentle on the eye.



New formula:  
without exogenous  
components

Rapid neutralization:  
due to high buffer capacity

Multilingual label:  
available in all European  
languages

Especially gentle:  
pH-neutral and without  
preservatives

This is what the press writes about BioPhos74:

### New eye rinsing solution allows highly effective treatment.

...The eye rinsing solution BioPhos74 is highly effective and at the same time very well tolerated. As it is adapted to the extracellular electrolyte ratios (sodium-potassium content) of the tissue, secondary cell damage in the eye area is largely reduced.

Source: Extract 8.2011 | 34. Jahrgang | Rettungsdienst | 713

## Special Advantages

### **i** Did you know?

Your eye is a masterpiece of nature and your most important sense organ. Only the interaction of many small parts in this organ makes SEEING possible. When working with chemicals, they can enter the eye as solid, liquid or gaseous substances. Therefore, eye protection is very important at work! Please have **BioPhos®74** ready in case of an emergency in order to quickly and effectively prevent damage to the eye in case of chemical burns.

**BioPhos®74** works effectively and maintains the cellular electrolyte equilibrium through the exclusive use of natural substances that are subject to physiological metabolism and especially correspond to the extracellular sodium-potassium ratio.

## Areas of Use

The **BioPhos®74** rinsing solution in the 250 ml bottle is versatile and an important part of the first aid kit e.g. for

- **Businesses & Laboratories**
- **Transport of dangerous goods**
- **Emergency Services**
- **Fire department & disaster control**
- **Police & Military**

**BioPhos®74** is a useful addition to stationary eye showers, since they are highly concentrated, corrosive and rapidly penetrating chemicals require a rapid intervention time and unbuffered rinsing solutions are not sufficient to ensure an irreversible prevent cell damage.

## Effect

The **BioPhos®74** rinsing solution neutralizes immediately due to its buffering effect in the physiological pH-range of 7.4 and is particularly gentle due to the absence of any exogenous components such as preservatives. Since it contains the extra- is adapted to the cellular electrolyte conditions of the tissue, secondary cell damage after rinsing is largely reduced by **BioPhos®74**.

Due to the high buffer capacity **BioPhos®74** acts fast in case of eye burns caused by strong acids and alkaline solutions. The sterile rinsing solution is ready for use in the handy 250 ml bottle for fast initial treatment. The integrated ergonomic rinsing head allows easy and correct application - even for laymen and injured persons without additional help. After application of **BioPhos®74** rinse with physiological sodium chloride solution (0.9%).

### Useful information on the correct labelling of eye rinsing solutions according to the Medical Devices Act and the standards for eye rinsing:

The image shows the packaging for Actiomedic Eye Care Augenspüllösung. It features a multilingual label with instructions in 18 languages. Key markings include the CE mark, a sterile symbol, a lot number (123456), an expiration date (2023-06), and a barcode. The packaging also displays the manufacturer's name (GRAMM medical) and the volume (500 ml).

Multilingual label available in all European languages

Marking with CE and indication of the monitoring center

Marking the sterility of the product

Article number and PZN

Indication of the manufacturer or person placing the product on the market

Pictograms for easy and safe use of eye rinsing

Specification of the batch number and the durability of the eye wash solution (GRAMM medical: at least 3 years)

## Application - easy and fast

Our **ACTIOMEDIC® EYE CARE** eye rinses with ergonomic rinsing head are so easy to use:



1. Remove the bottle from the station.



2. Remove the dust protection cap from the eye wash bottle head.



3. Turn eye rinsing bowl by 180° until sealant breaks.



4. Lean back the head, place the eye cup over the eye and rinse.



5. Bend the head forward and rinse if clothing should not get wet.

### Please note:

For all soiling, the eye should be rinsed with a soft and even jet.

Gently press the eye rinsing bottle during the rinsing process. Medical advice should be sought for any eye injury or soiling.

Flushing should continue during transport to the doctor. Do not reuse an opened bottle (risk of infection).

Here on request your company logo!



## AUGEN-NOTFALLPLAN



Schadstoff-Einwirkung	Empfohlene Spüllösung	Anwendung	Fortsetzung bis zur ärztlichen Behandlung
<b>Fremdkörper</b> z.B. Staub, Schmutz, Metall- und Holzsplitter	Actiomedic Natriumchloridlösung (0,9%)	Augen so lange spülen bis die Fremdkörper herausgewaschen sind.	Spülung mit Actiomedic Natriumchloridlösung (0,9%)
<b>Säureschäden</b>	gepufferte Spüllösung <b>BioPhos®74</b>	Augen mit <b>BioPhos®74</b> ca. 2,5 Minuten spülen bis die Flasche entleert ist.	Spülung mit Actiomedic Natriumchloridlösung (0,9%)
<b>Alkalische Schäden</b> ausgenommen kalziumhaltige Substanzen, z.B. Kalk und Zement	gepufferte Spüllösung <b>BioPhos®74</b>	Augen mit <b>BioPhos®74</b> ca. 2,5 Minuten spülen bis die Flasche entleert ist.	Spülung mit Actiomedic Natriumchloridlösung (0,9%)
<b>Sonstige Schäden</b> z.B. Lösemittel und Öle, außer Substanzen, die Silber enthalten	Actiomedic Natriumchloridlösung (0,9%)	Augen so lange spülen bis das unangenehme Gefühl nicht mehr spürbar ist.	Spülung mit Actiomedic Natriumchloridlösung (0,9%)



Entnehmen Sie die Flasche aus der Augenspülstation, bzw. dem Augenspülkoffer



Drehen Sie die Augenschale um 180° in Richtung des Pfeils bis die Versiegelung bricht.



Legen Sie den Kopf in den Nacken und spülen Sie das Auge gleichmäßig.



Beugen Sie sich vor dem Absetzen der Flasche nach vorn um Ihre Kleidung vor Nässe zu schützen.



**WICHTIG:** Spülen Sie das Auge unabhängig von der Art der Verletzung stets mit einem gleichmäßigen weichen Strahl und halten Sie es dabei weit geöffnet. Drücken Sie die Flasche beim Spülen leicht.

Bei jeder Augenverletzung / -verschmutzung ist unverzüglich ärztlicher Rat einzuholen! Setzen Sie die Spülung unbedingt mit Natriumchloridlösung (0,9%) fort bis ein Arzt konsultiert wurde.

GRAMM 3. Brand 12/2017  
NF 78 - 0000000000

# Eye Wash Bottles



## ACTIOMEDIC® EYE CARE eye wash bottle with sodium chloride solution 0.9%, 500 ml

Sterile eyewash bottle with sodium chloride solution, corresponds DIN EN 15 154-4, for rinsing out foreign bodies, e.g. wood and metal splinters, shavings, dust, dirt. For mobile use or for refilling the station and case, with ergonomic rinsing head and dust cap.

Content: 500 ml                      Dimensions: 225 x ø80 mm    Durability: > 3 years  
Rinsing time: approx. 5 min.    Weight: 580 g

Art.Nr.	Version	PU
500.000.05000	Eye wash bottle 500 ml with dust protection cap	6 pcs.



## ACTIOMEDIC® EYE CARE eye wash bottle with sodium chloride solution 0.9%, 250 ml

Sterile eyewash bottle with sodium chloride solution, corresponds DIN EN 15 154-4, for rinsing out foreign bodies, e.g. wood and metal splinters, shavings, dust, dirt. For mobile use or for refilling the station and case, with ergonomic rinsing head and dust cap.

Content: 250 ml                      Dimensions: 190 x ø65 mm    Durability: > 3 years  
Rinsing time: approx. 2,5 min.    Weight: 330 g

Art.Nr.	Version	PU
500.000.02500	Eye wash bottle 250 ml with dust protection cap	10 pcs.



## ACTIOMEDIC® EYE CARE eye wash bottle with buffered rinsing solution BioPhos®74, 500 ml

Sterile eye rinsing bottle with phosphate-buffered rinsing solution (4.9%), for eye burns caused by chemicals, high buffer capacity, particularly gentle due to the absence of exogenous components and preservatives, complies with DIN EN 15 154-4. For mobile use or for refilling station and case, with ergonomic rinsing head and dust cap

Content: 500 ml                      Dimensions: 225 x ø80 mm    Durability: > 3 years  
Rinsing time: approx. 5 min.    Weight: 580 g

Art.Nr.	Version	PU
500.100.74500	BioPhos®74 500 ml with dust protection cap	6 pcs.



## ACTIOMEDIC® EYE CARE eye wash bottle with buffered rinsing solution BioPhos®74, 250 ml

Sterile eye rinsing bottle with phosphate-buffered rinsing solution (4.9%), in case of chemical eye burns, high buffer capacity, particularly gentle due to the absence of exogenous components and preservatives, complies with DIN EN 15 154-4. For mobile use or for refilling the ward and case, with ergonomic rinsing head and dust cap.

Content: 250 ml                      Dimensions: 190 x ø65 mm    Durability: > 3 years  
Rinsing time: approx. 2,5 min.    Weight: 330 g

Art.Nr.	Version	PU
500.100.74200	BioPhos®74 250 ml with dust protection cap	10 pcs.



# The new **ACTIOMEDIC®** Eye Wash Bottle **TWIN**

Allows both eyes to be rinsed simultaneously.

**NEW!**  
in assortment

### Adaptable

Ergonomically shaped eye cup for both eyes.  
Fits the eyes perfectly and enables comfortable rinsing.



Recess for the nose

### Simultaneous rinsing

Double even irrigation jet for simultaneous and gentle rinsing of both eyes.



## Special Advantages

In an emergency, just a few seconds can make the difference between impaired vision and, in the worst case, loss of vision. If first aid is not given immediately and consistently in such a case, the eye can suffer permanent irreparable damage.



GRAMM medical therefore offers you **ACTIOMEDIC® EYE CARE** **TWIN** an eye rinse with which both eyes can be rinsed simultaneously in case of an eye injury.

**For double safety and for even faster help in an emergency.**





## Eye Wash Bottles TWIN



### ACTIOMEDIC® EYE CARE TWIN eye wash bottle with sodium chloride solution 0.9%, 500 ml

Sterile eye rinsing bottle with sodium chloride solution, for rinsing out foreign bodies, e.g. wood and metal splinters, chips, dust, dirt, according to DIN EN 15 154-4, for mobile use or for refilling of ward and case, with ergonomic rinsing head for simultaneous rinsing of both eyes

Content: 500 ml    Dimensions:    Durability:  
Rinsing time: approx. 2.5 min.                  120 x 80 x 210 mm                                  > 3 years  
Weight: 580 g

Art.Nr.	Version	PU
500.000.05002	Eye wash bottle sodium chloride 500 ml TWIN	6 pcs.



### ACTIOMEDIC® EYE CARE TWIN eye wash bottle with buffered rinsing solution BioPhos®74, 500 ml

Sterile eye wash bottle with BioPhos®74 buffered rinsing solution, for treatment of chemical burns, high buffer capacity, according to DIN EN 15 154-4, for mobile use or refilling of ward and case, with ergonomic rinsing head for simultaneous rinsing of both eyes

Content: 500 ml    Dimensions:    Durability:  
Rinsing time: approx. 2.5 min.                  120 x 80 x 210 mm                                  > 3 years  
Weight: 580 g

Art.Nr.	Version	PU
500.200.74203	Eye wash bottle BioPhos®74 500 ml TWIN	6 pcs.



500.200.30010

500.200.30020

### ACTIOMEDIC® EYE CARE TWIN Single I or II eye wash station

Eye rinsing station with one bottle for wall mounting, bottle ready for use and sterile with ergonomic rinsing head TWIN for simultaneous rinsing of both eyes, incl. pictogram board and mirror, for easy handling, incl. holder, eye emergency plan and mounting material, depending on application with 500 ml sodium chloride solution or 500 ml buffered rinsing solution BioPhos®74.

Rinsing time: approx. 2.5 min.                                  Dimensions: 215 x 80 x 300 mm  
Durability: > 3 years

Art.Nr.	Version	PU
500.200.30010	Eye wash station sodium chloride 500 ml TWIN Single I	1 pc.
500.200.30020	Eye wash station BioPhos®74 500 ml TWIN Single II	1 pc.

# The new **ACTIOMEDIC® Medi2Protect** Eye Wash Station

For even faster and more effective help in an emergency.

**NEW!**  
in assortment



**Easy to grasp**  
The large handle makes it easy to use even with gloves in an emergency.

**Water protected**



**Recommendation:**

Scan the QR Code for more information.



**Integrated mirror**

**Heated**  
Optionally also heatable available.

**Window**  
So that it is immediately recognizable whether the eye wash station is filled and ready for use.

## Special Advantages

In endangered workplaces such as workshops, metalworking stores or chemical laboratories, eye rinsing solutions must be available according to the workplace ordinance §39.

Here GRAMM medical offers a fast accessible, robust and easy to operate eye rinsing station for wall mounting or for mobile use. The comfortable wall-mounted eye wash station offers easy and fast access to the eye rinsing solution, so that in case of emergency a quick reaction is possible.

The station offers space for up to three **ACTIOMEDIC® EYE CARE** eye wash bottles, which can be combined as required.

A further and very important advantage of our new eye rinsing station is that it can be used flexibly. Mounted on the wall, it is a concrete point of contact for injured persons and thanks to the striking signal color, it is easy to find even with limited vision. As a mobile emergency case, it can also be taken into the danger zone, so that in an emergency, first aid can be given quickly and flexibly directly at the scene of the accident.

# Medi2Protect Eye Wash Station



## ACTIOMEDIC® EYE CARE Medi2Protect I

Quickly accessible and easy to use eye wash station in orange, for wall mounting or to use as mobile emergency case, with transparent front panel, three bottles ready to use and sterile with ergonomic rinsing head, incl. mirror for easy handling, dustproof, waterproof and space saving, incl. mounting material + eye emergency plan

Rinsing time : approx. 15 min (total)      Durability > 3 years  
Dimensions: 35,5 x 11 x 50 cm              Weight: 2,75 kg

Art.Nr.	Version	PU
500.200.20000	Eye wash station 2 x 500 ml sodium chloride 0.9% 1 x 250 ml BioPhos®74	1 pc.



## ACTIOMEDIC® EYE CARE Medi2Protect II

Quickly accessible and easy to use eye wash station in orange, for wall mounting or to use as mobile emergency case, with transparent front panel, three bottles ready to use and sterile with ergonomic rinsing head, incl. mirror for easy handling, dustproof, waterproof and space saving, incl. mounting material + eye emergency plan

Rinsing time : approx. 15 min (total)      Durability > 3 years  
Dimensions: 35,5 x 11 x 50 cm              Weight: 2,75 kg

Art.Nr.	Version	PU
500.200.20010	Eye wash station 3 x 500 ml sodium chloride 0.9%	1 pc.



500.200.10000



500.200.10010

## ACTIOMEDIC® EYE CARE Medi2Protect **TWIN** I oder II Augenspülstation

Quickly accessible and easy to use eye wash station in orange, for wall mounting or to use as a mobile emergency case, with transparent front panel, three bottles ready for use and sterile with ergonomic TWIN rinsing head, incl. mirror for easy handling, dust-tight, water-repellent and space-saving, incl. mounting material + eye emergency plan, available in two versions

### Medi2Protect TWIN I

Content: 2 x 500 ml sodium chloride      Dimensions: 350 x 110 x 500 mm  
1 x 500 ml BioPhos®74                      Weight: 2,75 kg  
Rinsing time: 2.5 min per bottle              Durability: > 3 years

### Medi2Protect TWIN II

Content: 3 x 500 ml Natriumchlorid      Dimensions: 350 x 110 x 500 mm  
Rinsing time: 2.5 min per bottle              Weight: 2,75 kg  
Durability: > 3 years

Art.Nr.	Version	PU
500.200.10000	Eye Wash Station TWIN I	1 pc.
500.200.10010	Eye Wash Station TWIN II	1 pc.

# Eye Wash Stations

## ACTIOMEDIC® EYE CARE Design Eye Wash Station Medidrop I

Optically appealing and easy to use eye wash station with transparent lid and two bottles for wall mounting, bottles ready for use and sterile with ergonomic rinsing head, incl. mirror and pictogram for easy handling, dust-tight and space-saving, incl. mounting material + eye emergency plan.

Contents: 2 x 500 ml sodium chloride solution 0.9

Rinsing time (total): approx. 10 min  
Dimensions: approx. 27 x 10 x 35 cm

Durability: > 3 years

Art.Nr.	Version	PU
500.101.10010	2 x 500 ml sodium chloride 0,9%	1 pc.



## ACTIOMEDIC® EYE CARE Design Eye Wash Station Medidrop II

Optically appealing and easy to use eye wash station with transparent lid and two bottles for wall mounting, bottles ready for use and sterile with ergonomic rinsing head, incl. mirror and pictogram for easy handling, dust-tight and space-saving, incl. mounting material + eye emergency plan.

Content: 1 x 500 ml sodium chloride solution and 1 x 250 ml buffered rinsing solution BioPhos®74

Rinsing time:  
approx. 5 min. sodium chloride,  
approx. 2.5 min. BioPhos®74

Dimensions: approx. 27 x 10 x 35 cm  
Durability: > 3 years

Art.Nr.	Version	PU
500.100.10020	1 x 500 ml sodium chloride 0,9% + 1 x 250 ml BioPhos®74	1 pc.



## ACTIOMEDIC® EYE CARE Eye Wash Station Single I & II & III

Eye wash station with one bottle for wall mounting, bottle ready for use and sterile with ergonomic rinsing head and dust cap, incl. pictogram board and mirror, for easy handling, incl. holder, eye emergency plan and mounting material, available in two versions, depending on the application with 500 ml sodium chloride solution or 250 ml / 500 ml buffered rinsing solution BioPhos®74.

Dimensions: approx. 20 x 30 cm

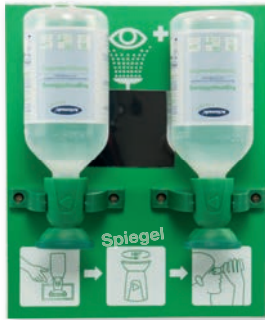
Durability: > 3 years

Art.Nr.	Version	PU
500.000.01190	Single I - 500 ml sodium chloride 0,9%	1 pc.
500.100.01290	Single II - 250 ml BioPhos®74	1 pc.
500.100.01390	Single III - 500 ml BioPhos®74	1 pc.



500.000.01190

500.100.01290



## ACTIOMEDIC® EYE CARE Eye Wash Station Double I

Eye wash station with two bottles for wall mounting, bottles ready for use and sterile with ergonomic rinsing head and dust cap, incl. holder for wall mounting, with mirror and pictogram for easy handling, incl. mounting material + eye emergency plan.

Contents: 2 x 500 ml sodium chloride solution 0.9

Rinsing time: approx. 10 min (total) Durability: > 3 years

Dimensions: approx. 25 x 30 cm

Art.Nr.	Version	PU
500.000.01100	2 x 500 ml sodium chloride solution, 0.9	1 pc.



## ACTIOMEDIC® EYE CARE Eye Wash Station Double II

Eye wash station with two bottles for wall mounting, bottles ready for use and sterile with ergonomic rinsing head and dust cap, incl. holder for wall mounting, with mirror and pictogram for easy handling, incl. mounting material + eye emergency plan.

Content: 1 x 500 ml sodium chloride solution 0.9% and  
1 x 250 ml buffered rinsing solution BioPhos®74

Rinsing time: approx. 5 min sodium chloride    Dimensions: approx. 25 x 30 cm  
approx. 2.5 min BioPhos®74    Durability: > 3 years

Art.Nr.	Version	PU
500.100.01150	1 x 500 ml sodium chloride solution, 0.9% + 1 x 250 ml BioPhos®74	1 pc.



## Belt bag for 250 ml eye wash bottles

Practical belt pouch with Velcro fastener and fastening straps for mobile use, protects against dirt, can be opened easily and quickly in an emergency.

Dimensions: approx. 20 cm x 7 cm

Color: green, with eye wash symbol

Art.Nr.	Version	PU
500.100.64300	Belt bag for 250 ml bottle / empty	1 pc.



## Wound Care | Wound Cleaning

### **i** Did you know?

The **ACTIOMEDIC® Wound and Eye Spray** with 0.9% phosphate-buffered sodium chloride solution is the ideal addition to the mobile and stationary first aid equipment. The spray can be easily put into the first aid kit as additional equipment or carried along by its compact size in mobile use.

Uncomplicated and one-handed, it is suitable for cleaning smaller wounds as

well as for washing out foreign bodies in the eyes. The spray does not burn in the wound and sprays in all directions with an even jet.

In contrast to eye rinsing bottles, the wound and eye spray can be used several times and still remains sterile. The protective cap additionally protects the spray head from external soiling.

- ✓ easy, one-handed application
- ✓ multiple use possible - remains sterile
- ✓ including protective cap
- ✓ 0.9% sterile, phosphate-buffered sodium chloride solution
- ✓ hypoallergenic and skin friendly
- ✓ without irritating preservatives
- ✓ multilingual labelling



### ACTIOMEDIC® Wound and Eye Spray

Spray for cleaning smaller wounds and washing out eyes. Contains phosphate-buffered sodium chloride solution 0.9%. Multiple use possible - remains sterile. Can be sprayed with an even jet in all directions. Includes protective cap.

Dimensions: 19 x 72 mm, 25 x 72 mm

Contents: 50 ml phosphate-buffered sodium chloride solution 0.9%

Art.Nr.	Version	PU
500.000.40050	50 ml wound and eye spray incl. protective cap	16 pcs.

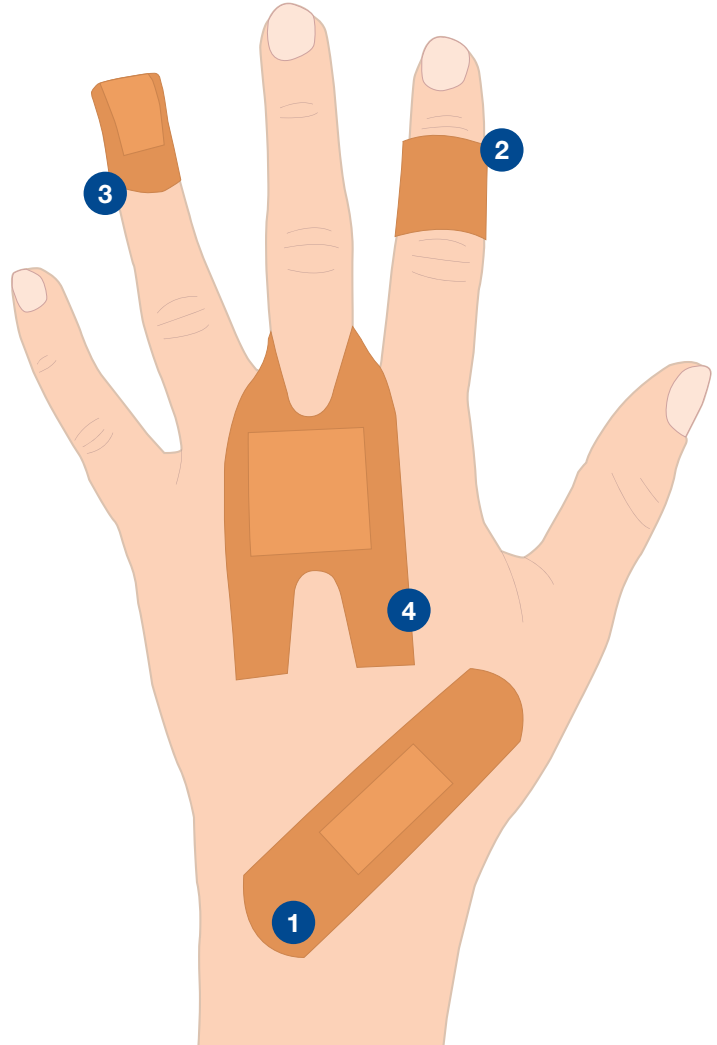




# Plasters | Application

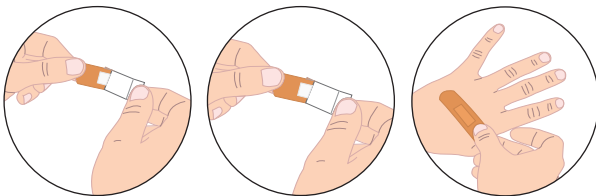
## ACTIOMEDIC® Plasters are...

- ✔ **Reliable**  
 They stick to the skin as long as they are supposed to hold.
- ✔ **Hypoallergenic**  
 Tested skin compatibility you can rely on.
- ✔ **Versatile**  
 Available in different sizes, shapes and materials for all applications.
- ✔ **High quality**  
 As only tested fabrics, fleeces and foils are processed.
- ✔ **Skin-friendly**  
 Because they are tested for skin compatibility.



## Applications

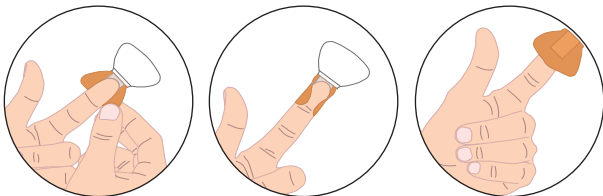
### 1 Plaster Strip



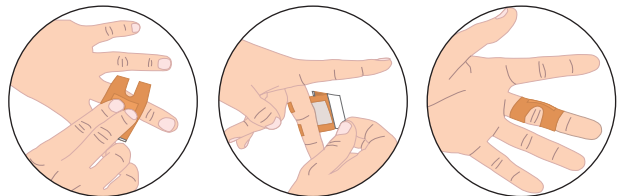
### 2 Finger Plaster



### 3 Fingertip Plaster



### 4 Finger Joint Plaster





# Quality Features

## **i** Did you know?

**ACTIOMEDIC®** plasters from GRAMM medical keep their promise.

We offer you a wide range of plasters in the practical large box for commercial use as well as cuttable wound dressings in different versions in a dispenser box.

**All ACTIOMEDIC® plasters are medical products and are subject to strict quality controls.**

Depending on the design and application ACTIOMEDIC® plasters are divided into five different areas.

**ELASTIC:** High elasticity, maximum comfort, even in places with a lot of movement.

**AQUATIC:** Water-repellent, breathable and reliable adhesive.

**DETECT:** Detectable for use in the food industry, water-repellent and elastic available.



**ELASTIC**  
**AQUATIC**  
**DETECT**



## Detectable Plasters

Detectable plasters with metallic inlays have become widely accepted in food processing as well as in the entire processing and application process as part of quality assurance.

In addition to the metallic inlay, the blue color serves for visual recognition.

- ✓ hypoallergenic
- ✓ water-repellent or elastic
- ✓ electromagnetically detectable
- ✓ breathable

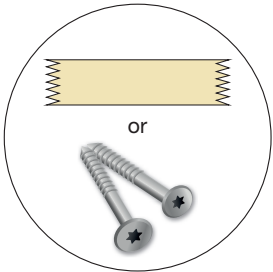
Detectable plasters are mandatory for the following certifications:

- BRC (British Retail Consortium)
- IFS certification (International Food Standard)
- ... and recommendable with:
- HACCP (Hazard Analysis Critical Control Point)

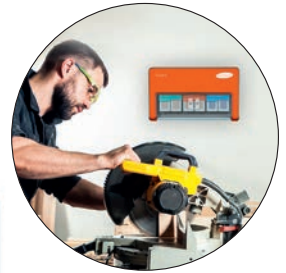
Features	ELASTIC	AQUATIC	DETECT DETECT + ELASTIC DETECT + AQUATIC
Elastic	+		+ +
Water-Repellent		+	+
Breathable	+	+	+
Hypoallergenic	+	+	+ +
Skin-friendly	+	+	+ +
Detectable (Metal)			+ +



# Wound Care | EasyAid Plaster Dispenser



**Optional anti-theft protection**  
If activated, the exchange of the patch refills is only possible with the appropriate key



**Easy to find**  
Good visibility even in demanding environments due to signal color orange

**Easy assembly**  
Can be easily attached with screws or adhesive strips

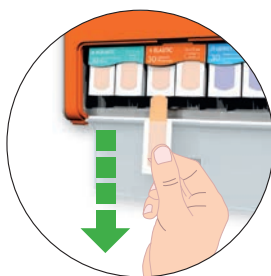
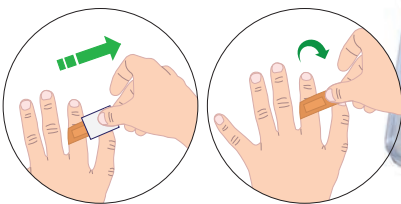


**3-fold protection**  
Offers space for up to three different types of plasters

**Ready for immediate use**  
Plasters can be applied directly after removal



**Well protected**  
Fully enclosed housing protects the contents from dirt, dust and splash water



**Clean removal**  
Patch removal downwards = no contamination of the donor by dirt or dripping blood

**The EasyAid Reminder**  
Never again without plasters - the smart Kanban system reminds you in time to order new refills

# EasyAid. Easy life.

The innovative EasyAid plaster dispenser is a high-quality processed and well thought-out plaster dispenser, which offers a central and clearly visible contact point in the office and business in case of emergency. The handling is intuitive and uncomplicated.

With space for up to three types of plasters, the plaster dispenser offers extensive protection for different applications. The plasters are packed clean and protected in sealing paper until they are removed. Immediately after the removal of a plaster, it is ready for use and can be applied with one hand. Since the plaster is removed downwards, the dispenser and the remaining plasters are protected from dirt or dripping blood.



## ACTIOMEDIC® EasyAid Plaster Dispenser, Standard I + II

Single-handed plaster dispenser with space for up to three types of plasters. Refillable. Clean removal through downward opening flap. Optional activatable anti-theft device. Closed housing protects the contents even in demanding environments. Easy to recognize due to signal color orange. Including installation material and operating instructions.

Dimensions: approx. 26.8 x 3.3 x 16.2 cm    Material plaster: PE and textile fabric  
 Color: Orange    Contents: 3 plaster refills  
 (90 plasters in total)

Art.Nr.	Version	PU
120.800.10000	EasyAid plaster dispenser with <b>Standard I filling:</b> 2x plaster strips <b>AQUATIC</b> , 19 x 72 mm, à 30 plasters 1x plaster strips <b>ELASTIC</b> , 19 x 72 mm, à 30 plasters	6 pcs.
120.800.12000	EasyAid plaster dispenser with <b>Standard II filling:</b> 1x plaster strips <b>ELASTIC</b> , 19 x 72 mm, à 30 plasters 1x finger tip plasters <b>ELASTIC</b> , à 15 plasters 1x plaster strips <b>AQUATIC</b> , 19 x 72 mm, à 30 plasters	6 pcs.



## ACTIOMEDIC® EasyAid Plaster Dispenser, DETECT I

Single-handed plaster dispenser with space for up to three types of plasters. Refillable. Clean removal through downward opening flap. Optional activatable anti-theft device. Closed housing protects the contents even in demanding environments. Easy to recognize due to signal color orange. Including installation material and operating instructions.

Dimensions: approx. 26.8 x 3.3 x 16.2 cm    Material plaster: PE and textile fabric  
 Color: Orange    Contents: 3 plaster refills  
 (90 plasters in total)

Art.Nr.	Version	PU
120.800.20000	EasyAid plaster dispenser with <b>Detect I Füllung:</b> 2x plaster strips <b>DETECT AQUATIC</b> , à 30 plasters 1x plaster strips <b>DETECT ELASTIC</b> , à 30 plasters	6 pcs.



Also available with colorful **KIDS** plasters!



# EasyAid Pflaster Refills

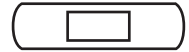


All EasyAid plaster refills are available in a practical, tear-open display box!



## EasyAid Plaster Refill AQUATIC

Water-repellent, hypoallergenic plaster strips in a refill set for the EasyAid plaster dispenser, individually packed in sealing paper until removal.



Art.Nr.	Version	PU
120.821.19720	30x <b>AQUATIC</b> plaster strips, 19 x 72 mm	8 pcs.



## EasyAid Plaster Refills ELASTIC

Elastic, hypoallergenic and air-permeable plasters in a refill set for the EasyAid plaster dispenser, individually packed in sealing paper until removal. Available in two different shapes.



Art.Nr.	Version	PU
120.820.19720	30x <b>ELASTIC</b> plaster strips, 19 x 72 mm	8 pcs.
120.821.04086	15x <b>ELASTIC</b> finger tip plasters, 43 x 68 mm	8 pcs.



## EasyAid Plaster Refills DETECT

Electromagnetically detectable, hypoallergenic plaster strips in a refill set for the EasyAid plaster dispenser, individually wrapped in sealing paper until removal. Available as water-repellent or elastic plaster strips.

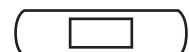


Art.Nr.	Version	PU
120.823.19720	30x <b>DETECT AQUATIC</b> plaster strips, 19 x 72 mm	8 pcs.
120.824.19720	30x <b>DETECT ELASTIC</b> plaster strips, 19 x 72 mm	8 pcs.



## EasyAid Plaster Refill KIDS

Water repellent, breathable and hypoallergenic plaster strips with colorful Jungle motif in the refill set for the EasyAid plaster dispenser, individually packed in sealing paper until removal.



Art.Nr.	Version	PU
120.826.19720	30x <b>KIDS</b> plaster strips, 19 x 72 mm	8 pcs.



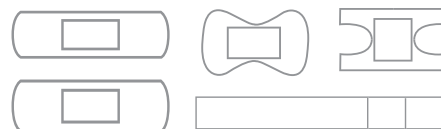
# Plasters | Plaster sets



## ACTIOMEDIC® ELASTIC Plaster Set

Elastic, hypoallergenic and air-permeable plasters, in five different sizes and shapes, individually sealed.

Color: skin color  
Material: textile fabric  
Content: 50 plasters



Art.Nr.	Inhalt	PU
317.001.60000	10 plaster strips 19 x 72 mm 10 plaster strips 25 x 72 mm 10 finger plasters 12 x 2 cm 10 fingertip plasters approx. 43 x 68 mm 10 finger joint plasters approx. 38 x 75 mm	20 Pack



## ACTIOMEDIC® AQUATIC Plaster Set

Water-repellent, hypoallergenic and air-permeable plasters, in five different sizes and shapes, individually sealed.

Color: skin color  
Material: PE  
Content: 50 plasters



Art.Nr.	Inhalt	PU
317.021.60000	10 plaster strips 19 x 72 mm 10 plaster strips 25 x 72 mm 10 finger plasters 12 x 2 cm 10 fingertip plasters approx. 43 x 68 mm 10 finger joint plasters approx. 38 x 75 mm	20 Pack



## ACTIOMEDIC® DETECT Plaster Set

Hypoallergenic and detectable plasters, in five different sizes and shapes, individually sealed.

Color: blue  
Material: PE or textile fabric  
Content: 50 pieces



Art.Nr.	Version	Inhalt	PU
336.020.60000	<b>DETECT, ELASTIC</b>	10 Plaster Strips 19 x 72 mm 10 Plaster Strips 25 x 72 mm 10 Finger Plasters 12 x 2 cm 10 Finger Tip Plasters approx. 43 x 68 mm 10 Finger Joint Plasters approx. 38 x 75 mm	20 Pack
336.001.60000	<b>DETECT, AQUATIC</b>	10 Plaster Strips 19 x 72 mm 10 Plaster Strips 25 x 72 mm 10 Finger Plasters 12 x 2 cm 10 Finger Tip Plasters approx. 43 x 68 mm 10 Finger Joint Plasters approx. 38 x 75 mm	20 Pack

# Plasters | Quick Adhesive Bandage

## ACTIOMEDIC® Quick Adhesive Bandage

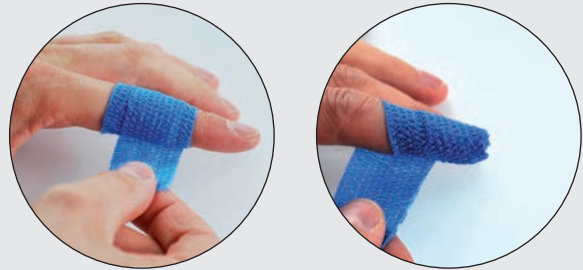
For all small finger injuries. Simple, safe and fast!

- ✓ does not stick to skin or hair
- ✓ water-repellent and elastic
- ✓ CE-marked medical product
- ✓ easy & comfortable to use
- ✓ allows maximum freedom of movement
- ✓ does not cause any impairment when working
- ✓ keeps fat, water & oil away from the wound
- ✓ tearable - no scissors are needed
- ✓ hypoallergenic

### Application:

- 1) Loosely wrap the bandage around the finger several times\*.
- 2) If necessary, wrap towards and around the fingertip.
- 3) Tear off dressing, press end of dressing - ready!

\*For open wounds put under wound compress



## ACTIOMEDIC® Quick Adhesive Bandage

Water-repellent, elastic quick bandage, available in blue colors, snug and easy to tear off, suitable for all small finger injuries.

Dimensions: 3 cm x 7 m  
Colors: blue

Art.Nr.	Maße	Farbe	PU
120.003.00001	3 cm x 7 m	blue	16 pcs.





# FIRST AID | Kids

## **i** Did you know?

Children need special protection - not least because they are very active and are not yet able to assess dangers themselves. Their small body size also requires special precautions for emergencies. We have put together some first aid products for you, which of-

fer reliable protection and safety when mobile or stationary, with dressing materials that are tailored to the needs of children and frequently occurring injuries - because fast and effective first aid can save lives!



## EasyAid Plaster Dispenser

### **ACTIONMEDIC® EasyAid Plaster Dispenser, KIDS**

Sophisticatedly designed and high-quality processed plaster dispenser with space for up to three types of plaster. Refillable. Clean removal through downward opening flap. Optional anti-theft device. Closed housing protects the contents even in demanding environments. Easy to recognize due to signal color orange. Includes water-repellent plaster strips with colorful jungle motif. Includes installation material and operating instructions.

Dimensions: approx. 26.8 x 3.3 x 16.2 cm  
Color: Orange

Material plaster: PE  
Contents: 3 plaster refills  
(90 plasters in total)

Art.Nr.	Version	PU
120.800.30000	EasyAid plaster dispenser with KIDS filling: 3x motif plaster strips <b>KIDS</b> , 19 x 72 mm, à 30 plasters	6 pcs.

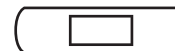


**Jungle  
STYLE!**



### **EasyAid Plaster Refill KIDS**

Water repellent, breathable and hypoallergenic plaster strips with colorful Jungle motif in the refill set for the EasyAid plaster dispenser, individually packed in sealing paper until removal.



Art.Nr.	Version	PU
120.826.19720	30x <b>KIDS</b> plaster strips, 19 x 72 mm	8 pcs.



# KIDS Plasters + Finger Bandage

## ACTIOMEDIC® KIDS Plaster Set

Colorful printed children's plaster set in the Mediboy plastic box - ideal for playground and excursion, water and dirt repellent, hypoallergenic, plasters in two colors.

Dimensions: approx. 95 x 30 x 125 mm      Content: 20 plaster strips, 19 x 72 mm  
Color: blue, translucent                      color: yellow and red patterned

Art.Nr.	Version	PU
420.018.50042	KIDS plaster set, blue, translucent	20 pcs.



## ACTIOMEDIC® KIDS Plasters

Water-repellent, hypoallergenic and air-permeable plasters, in four different sizes and shapes, individually sealed.

Color: patterned (Jungle)  
Material: PE  
Content: 30 plasters



Art.Nr.	Inhalt	PU
340.001.60000	10 plaster strips 19 x 72 mm 10 plaster strips 19 x 63 mm 5 plaster strips 50 x 72 mm 5 plasters 38 x 38 mm	12 pack



## ACTIOMEDIC® KIDS Finger Bandage

Water-repellent, elastic finger bandage, flexible and easy to tear off, suitable for all small finger injuries.

Color: patterned (green with stars)  
Dimensions: 2,5 cm x 4,5 m

Art.Nr.	Inhalt	PU
120.003.00006	Finger bandage KIDS, 2,5 cm x 4,5 m	16 pcs.



# Special First Aid | Home, Hobby + Leisure

## **i** Did you know?

Household, hobby and leisure time also hold a wide variety of injury risks. With the right first aid equipment you are optimally prepared in case of an emergency.

We offer products for different fields of application. Do you need a special, individually composed first aid kit?

Ask us, we will be happy to advise you.



## ACTIOMEDIC® Mediboy First Aid Sets



### ACTIOMEDIC® First Aid Tick Set

Compact mini-set for travel in the Mediboy plastic box, provides reliable first aid in case of a tick bite.

Dimensions: 95 x 30 x 125 mm  
Color: yellow, translucent

Contents: Tick tweezers, plaster, cleaning wipes, illustrated instruction manual

Art.Nr.	Version	PU
420.018.51001	yellow, translucent	20 pcs.



### ACTIOMEDIC® AQUATIC Plaster Set

Waterproof, hypoallergenic and breathable plaster strips in the Mediboy plastic box - ideal for small wounds.

Dimensions: 95 x 30 x 125 mm  
Color: blue, translucent

Content: 25 plaster strips à 19 x 72 mm

Art.Nr.	Version	PU
420.018.70092	blue, translucent	20 pcs.



### ACTIOMEDIC® TRAPUL First Aid Set

Compact selection of first aid material in the Mediboy plastic box - ideal for excursions, travel, sports and hobby.

Dimensions: 95 x 30 x 125 mm  
Color: green, translucent

Contents: Fixing bandage, compress, adhesive plaster, wound dressing

Art.Nr.	Version	PU
418.035.01535	green, translucent	20 pcs.





## Special First Aid | Burn Care

### ACTIOMEDIC® Burn Wound Set Maxi

For all areas with risk of burns, high-quality contents for hygienic first aid, for mobile or stationary use.

Contents: 2 burn wound gel compresses 10 x 10 cm, 3 sachets burn wound gel 3.5ml, 2 pairs of disposable gloves DIN EN 455, 3 compresses sterile, 75 x 75 mm, 3 fixation bandages DIN 61 634, 6 cm x 4 m, 6 plaster strips ELASTIC, 19 x 72 mm, 1 bandage pack scissors

Dimensions: 175 x 65 x 195 mm

Art.Nr.	Version	PU
100.035.03010	Burn Wound Set Maxi in plastic kit	1 pc.



### ACTIOMEDIC® Burn Wound Set Mini

For all areas with risk of burns, high-quality contents for hygienic first aid, for mobile use.

Contents: 2 sachets burn wound gel, 2 moist cloths, 2 compresses, 1 fixation bandage, 5 plaster strips

Dimensions: approx. 95 x 30 x 125 mm

Art.Nr.	Version	PU
100.035.03011	Burn Wound Set Mini in plastic kit	20 pcs.



## Burn Wound Coverings

### Burn Wound Gel

Burn wound gel in a practical single sachet, suitable for burns and sunburn, provides a distinct and long-lasting cooling effect, moisture regulating.

Dimensions: 45 x 86 mm      Content: 3.5 g



Art.Nr.	Version	PU
100.000.03001	Burn Wound Gel	24 pcs.

### Burn Wound Gel Spray

Practical spray, rapid cooling for immediate pain relief, suitable for burns and sunburn, ensures even distribution on the skin, no touch necessary, for a pronounced and long-lasting cooling effect, moisture regulating.

Dimensions: 110 mm, ø 35 mm      Content: 50 ml



Art.Nr.	Version	PU
100.000.03002	Burn Wound Gel Spray 50 ml	16 pcs.

 **GRAMM medical healthcare GmbH**  
Werkstraße 13, 71384 Weinstadt, Germany

Phone: +49 (0)7151 27 20 18 0  
Email: [info@gramm-medical.de](mailto:info@gramm-medical.de)  
[www.actiomedic.com](http://www.actiomedic.com)

Your specialist trade partner:

**N****ORDIK**